



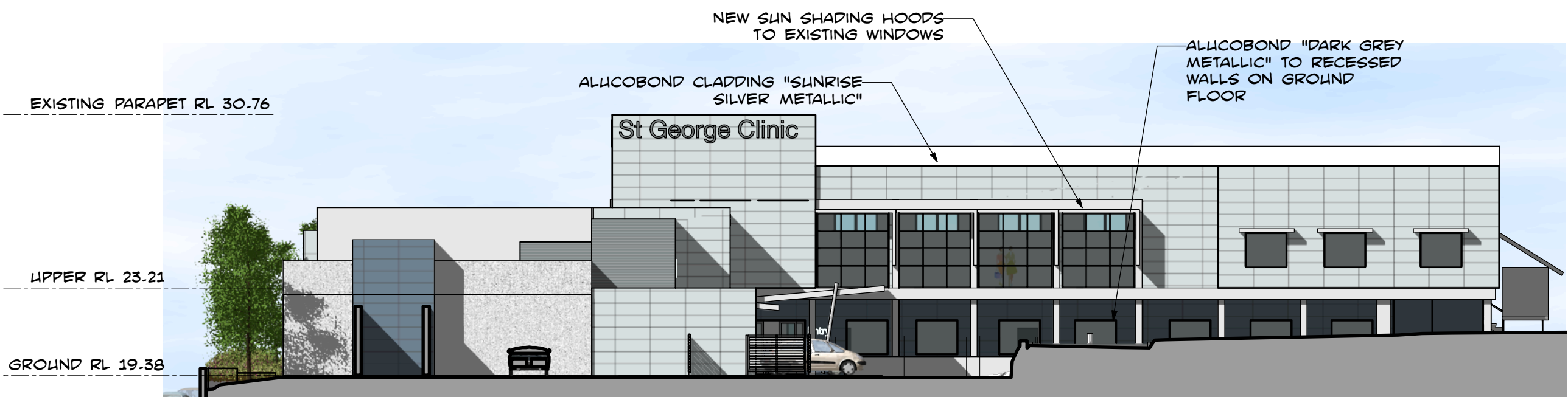
EAST ELEVATION



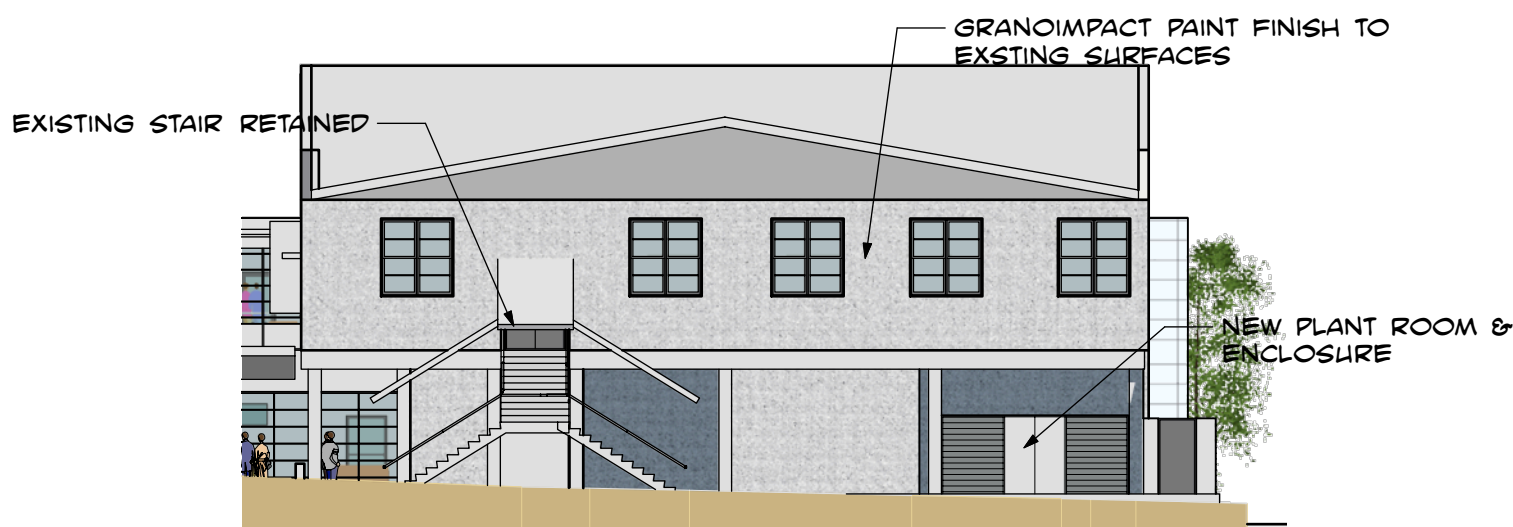
WEST ELEVATION
WITH SECTION THROUGH EXISTING BUILDING



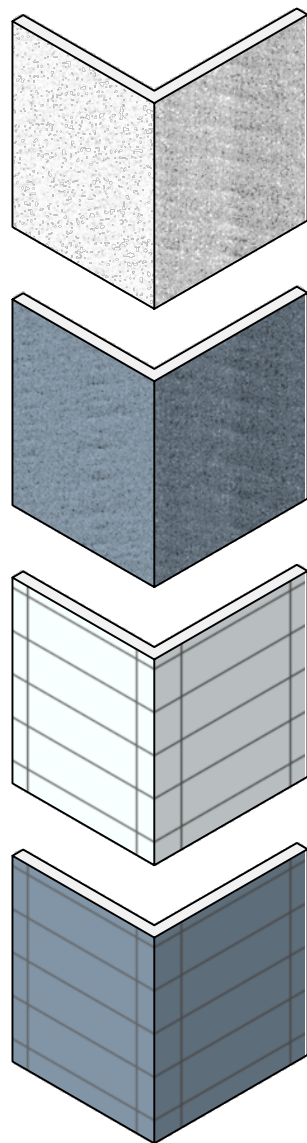
SOUTH ELEVATION



NORTH ELEVATION - ELEVATED CAR PARK OMITTED FOR CLARITY



WEST ELEVATION OF EXISTING BUILDING



EXTERNAL MATERIALS LEGEND

GRANOSITE GRANOIMPACT "LIGHT GREY"

GRANOSITE GRANOIMPACT "CHARCOAL"

ALUCOBOND ALUMINIUM COMPOSITE
PANELS - "SUNRISE SILVER METALLIC"

ALUCOBOND ALUMINIUM COMPOSITE
PANELS - "DARK GREY METALLIC"

rev.	date	details	pa.init

Project Managers & Builders

EQUISET
GROLLO GROUP

NOMINATED ARCHITECTS: S Costi(5447), D K Lane(5451), S B Kenny(5791),
D W Meams(4344), C L Straw(7488), C Glenville(3130)

ThomsonAdsett

New Integrated
Oncology Centre

143 & 155 Princes
Highway &
38-48 Chapel St,
Kogarah, NSW

project

Elevations

sheet

date: July 2010

scale: 1:200

drawn: km

checked:

verified:

09176

project_no.

DA 300

sheet_no.

revision

Original Sheet Size A1 - 594 x 840mm